

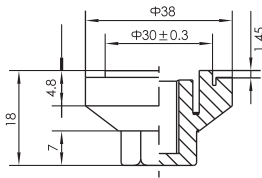
Part Number System for Screw Type

EC	G	2G	BP	682	M	E	155	B	A	□★
Capacitor Type	Terminal Type	Rated Voltage Code	Series Code	Capacitance Code (μF)	Capacitance Tolerance	Diameter	Length	Mounting	Terminal Options	Supplyment Code
EC= Electrolytic Capacitor	Screw=G	10 =1A	CD135 =BP	100 =101	±20% =M	36 =A	53 =053	Bolt =B	For terminal please refer to "Terminal Dimensions"	
		16 =1C	CD136 =PK	470 =471	±15% =L	40 =B	65 =065	3-leg Bracket=Y		
		25 =1E	CD137 =PX	1000=102	±10% =K	51 =C	96 =096	2-leg Bracket=I		
		35 =1V	CD138 =PC	2200=222	+30/-0% =F	64 =D	100=100	No Bracket=N		
		50 =1H	CD139 =BL	6800=682	+20/-0% =R	77 =E	155=155			
		63 =1J	CD13L =PL		+75/-10%=U	90 =F	236=236			
		80 =1K	CD138S =WP		+50/-10%=T	101=G				
		100 =2A	CD13H =BH		+30/-10%=Q					
		160 =2C	CD139S =HC		+20/-10%=V					
		200 =2D	CD13P =HP		+20/-5% =H					
		250 =2E	CD13W =HW		+50/-20%=S					
		350 =2V	CD13A =HA		+20/-15%=N					
		400 =2G	CD137S =PR							
		420 =2X	CDVT =WT							
		450 =2W								
		500 =2H								
		550 =2Y								
575 =2Z										
600 =2S										
630 =J2										

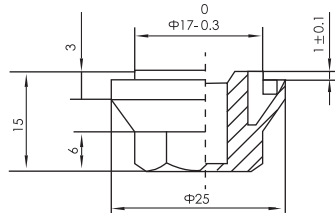
★Customer special requirement.

Ex1: CD135 400V4700μF 77x115 ± 20% M5
 PN:ECG2GBP472ME115YA
 Ex2: CD138S 450V3300μF 77x121 ± 20% bolt
 PN:ECG2WWP332ME121BC

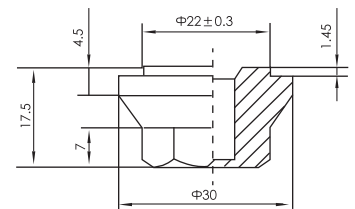
Accessories: Bolt Mounting (Code B)



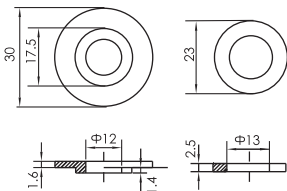
◆Nylon cap nut M12
 Order code: CN131C-01



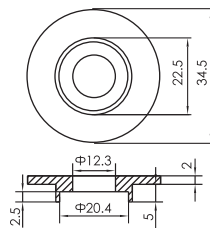
◆Nylon cap nut M8
 Order code: CN131C-02



◆Nylon cap nut M12
 Order code: CN131C-03

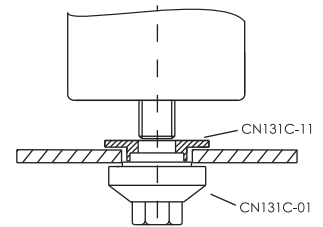


◆Insulating washer(plastic PBT)
 Order code: CN131C-12

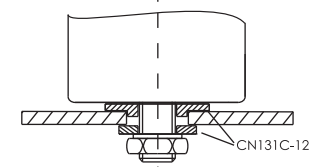


◆Insulating washer(plastic PP)
 Order code: CN131C-11

●Insulated mounting with cap nut



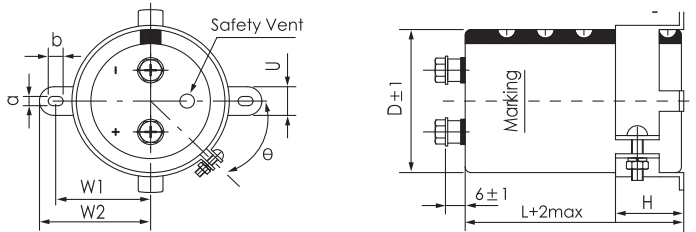
●Insulated mounting with steel nut



- Note: 1) Maximum tightening torque M12: 12.5Nm
 2) Recommended mounting hole diameter : 30.5mm(mounting with cap nut CN 131C-01)
 3) It is necessary to keep the insulation between bottom stud and mounting chasis.

■ Accessories: Bracket Mounting/mm

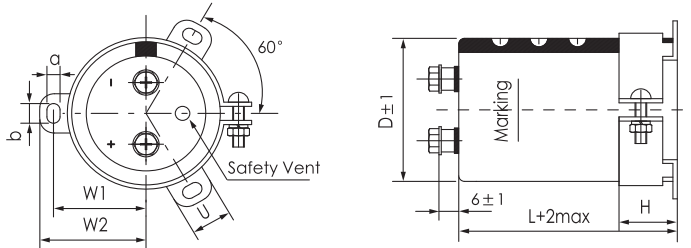
◆ 2-legs Bracket (Code I)



ΦD	W1	W2	a	b	U	H	Order Code
36	24	29	3.8	7	10	15	CT136B-01
51	34	40	5	7	14	30	CT151B-01
64	40.5	46.5	5	7	14	30	CT164B-01
77	46.8	53	5	7	14	30	CT176B-01
90	54	60.3	5	7	14	35	CT189B-01

*θ is optional for 45° or 30°

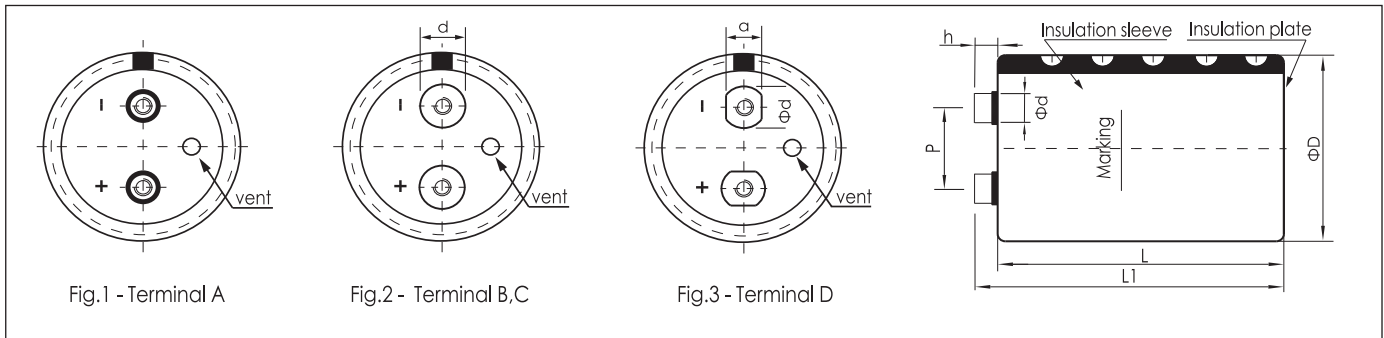
◆ 3-legs Bracket (Code Y)



ΦD	W1	W2	a	b	U	H	Order Code
51	31.8	36.5	5	7	14	30	CT151B-02
64	38.1	42.6	5	7	14	30	CT164B-02
77	44.5	49.2	5	7	14	30	CT176B-02
90	50.8	55.6	5	7	14	30	CT189B-02
101	57.5	63.5	5.5	8	20	35	CT199B-02

*Bracket will be delivered separately. If bracket is not necessary, enter "N" for the type of bracket code.

■ Terminal Dimensions /mm



Terminal Code	Can Diameter ΦD±1mm	Thread	Φd±0.3mm	Thread Depth	h±0.5mm	L1±2.0mm	Drawing
A	51~90	M5	10.0	9	6.0	L+h	Fig.1
B	77~90	M6	17.2	11	6.0	L+h	Fig.2
C	64	M5	13.0	9	6.0	L+h	Fig.2
	77~90	M5	17.2	11	6.0	L+h	Fig.2
D	51	M5	13 (a=10)	9	5.0	L+h	Fig.3
	64	M5	15 (a=13)	9	6.0	L+h	Fig.3
	77	M6	15 (a=13)	9	6.0	L+h	Fig.3

*Screws will be delivered separately.

*Special Terminals (Low post h=3.2, 1/4-28,10-32 thread) are available on request.

*Hex head M5×10 and M6×12 are standard screws. Longer screws (M5×20 e.g) are available on request.

*Max tightening torque for screw terminal M5: 3Nm, M6: 4Nm, M8: 6Nm.

*Max ripple current for screw terminal M5: 60 Arms, M6: 100 Arms.

Note: Generally, screw terminal capacitors should mount upright with terminal side face upwards.
If the capacitors is mounted horizontally, safety vent should located in 12, 9 o' clock position.
Safety vent in 6 o' clock position or downwards is not allowed.